

## turn on the projector

Aim remote at the front or back of the projectors and Press the Power button

\*Projector will take a few minutes to warm up

## select source

HDMI=teacher's station  
PC=vga connection  
VIDEO=DVD/VCR



**TURN OFF THE PROJECTOR WHEN YOU ARE FINISHED**

## av help

941-359-7633 | avservices@ringling.edu

## sound

Turn on the speakers.  
Press the power button on the far left of the mini amplifier.



Change the audio switcher input.  
Press the PC button for teacher's station. Press DVD/VHS for the deck



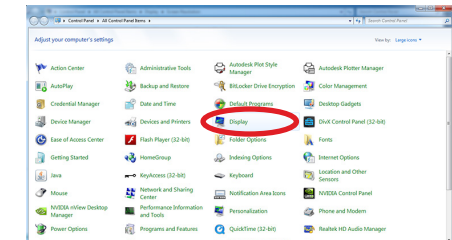
Adjust Volume  
Rotate the volume knob to control volume.  
Volume from computer is controlled from both computer volume controls and amplifier volume.  
Try not to go above 98% on computer or it may sound distorted.



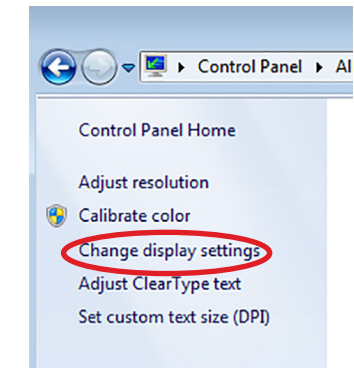
# QUICKSTART GUIDE

## done teacher's station

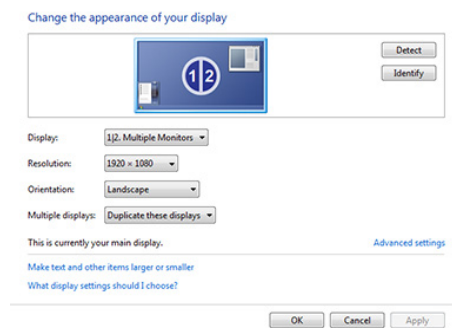
Open the Control Panel and select "Display".



From left-hand side choices select "Change display settings"



If 2 Monitors is not appearing for Display pull-down select "Detect".



If can only see desktop pattern make sure Multiple displays in on "Duplicate these displays" not "Extend".

If unable to detect display make sure the dvi cable is plugged into back of machine.