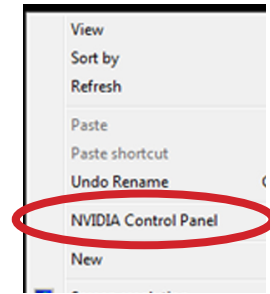


1

### Launch NVIDIA Control Panel

Right Mouse Click on the desktop  
Choose "NVIDIA Control Panel"



2

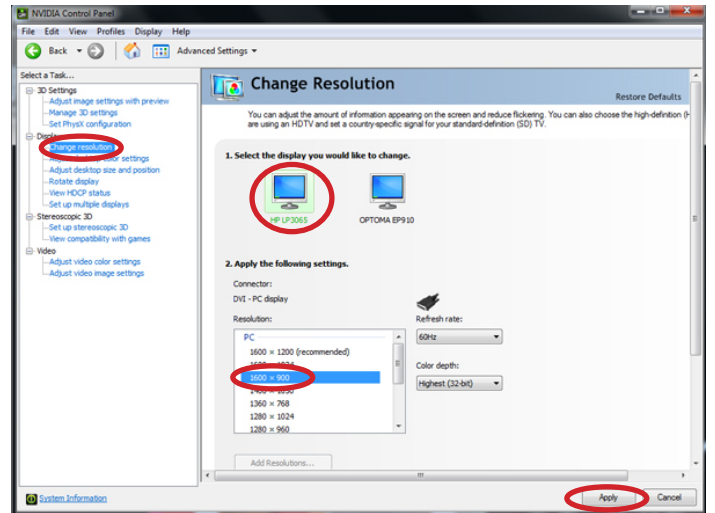
### Change Screen Resolution

From the left-side menu select  
"Change Resolution"

Under Step 1 right-hand side select HP LP3065 or  
the computer monitor icon

Under Step 2 select 1600x900

Click Apply



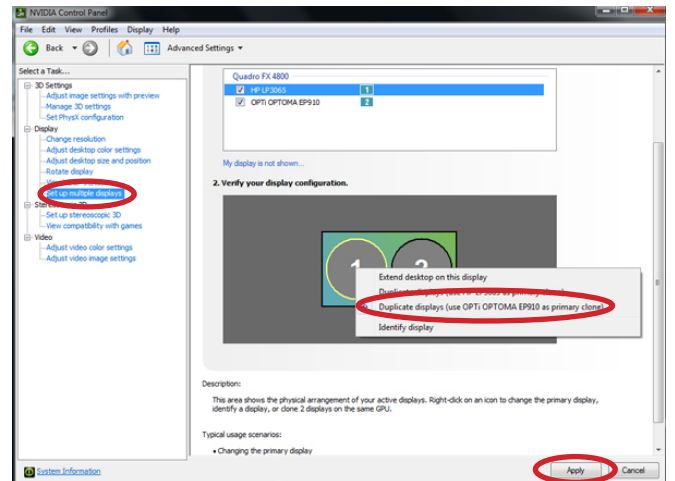
3

### Set-Up Multiple Displays

From the left-side menu select "Set-Up Multiple  
Displays"

Right mouse click Under Step 2. Select Duplicate  
display (use Optoma EP910 as the primary)

Click Apply



4

### Adjust Scaling

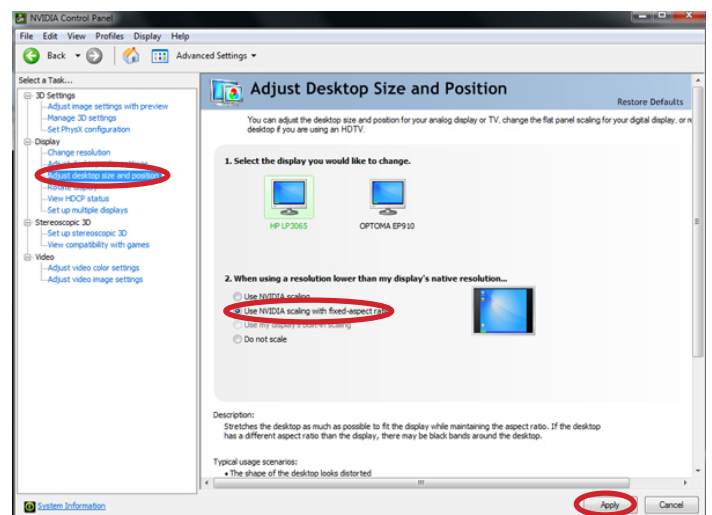
From the left-side menu select "Adjust desktop  
size and position"

Under Step 2 select "Use NVIDIA scaling with  
fixed-aspect ratio."

Click Apply

If everything looks normal click "Yes" on the  
Apply changes prompt

When finished close the NVIDIA window



# TROUBLESHOOTING Image Squashed not proportional

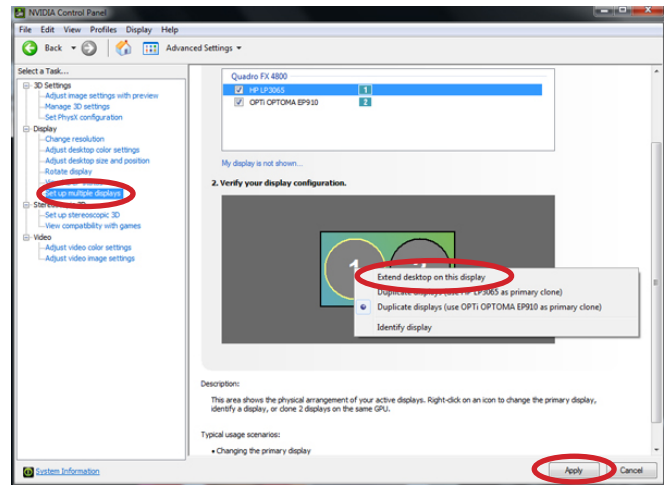
1

## Set-Up Displays

From the left-side menu select "Set-Up Multiple Displays"

Right mouse click Under Step 2. Select Extend desktop on this display

Click Apply



2

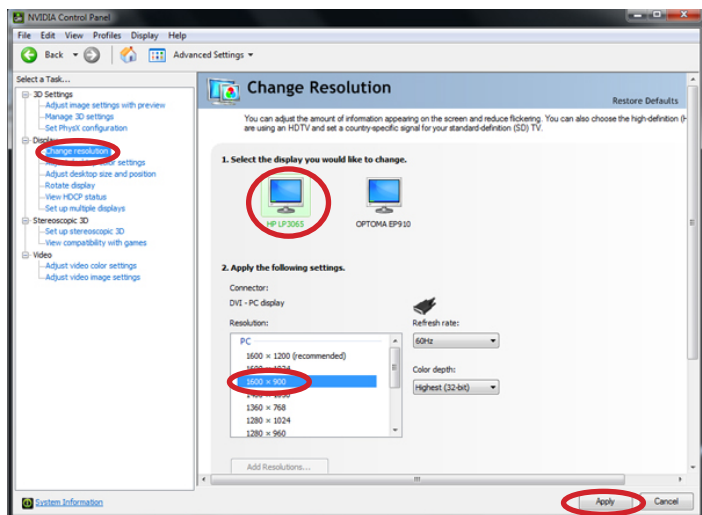
## Change Screen Resolution Computer Monitor

From the left-side menu select "Change Resolution"

Under Step 1 right-hand side select HP LP3065 or the computer monitor icon

Under Step 2 select 1600x900

Click Apply



## Change Scaling Computer Monitor

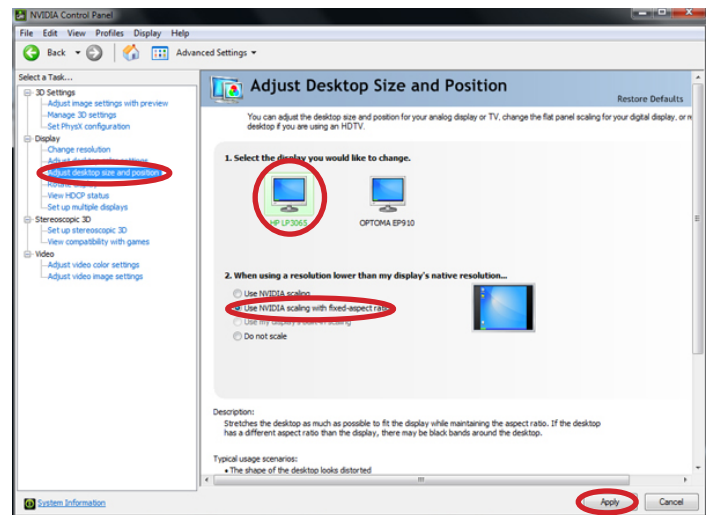
From the left-side menu select "Adjust desktop size and position"

Under Step 1 right-hand side select HP LP3065 or the computer monitor icon

Under Step 2 select "Use NVIDIA scaling with fixed-aspect ratio."

Click Apply

If everything looks sort of letterbox on the monitor click "Yes" on the Apply changes prompt



3

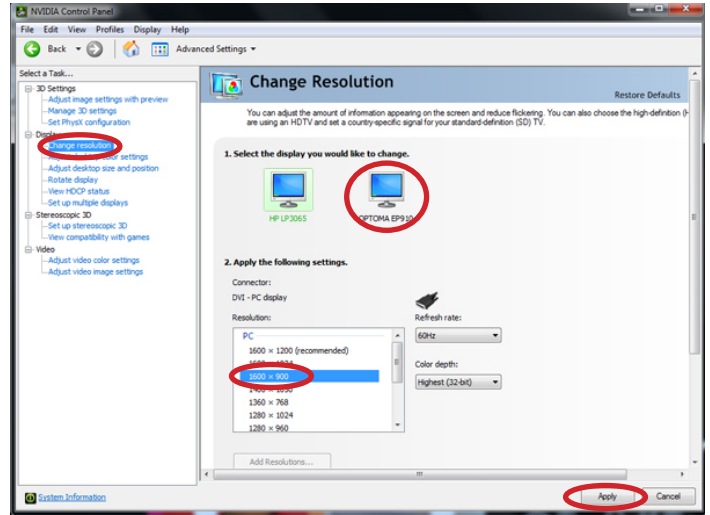
## Change Resolution Projector

From the left-side menu select "Change Resolution"

Under Step 1 right-hand side select Optoma EP910

Under Step 2 select 1600x900

Click Apply



## Change Scaling Projector

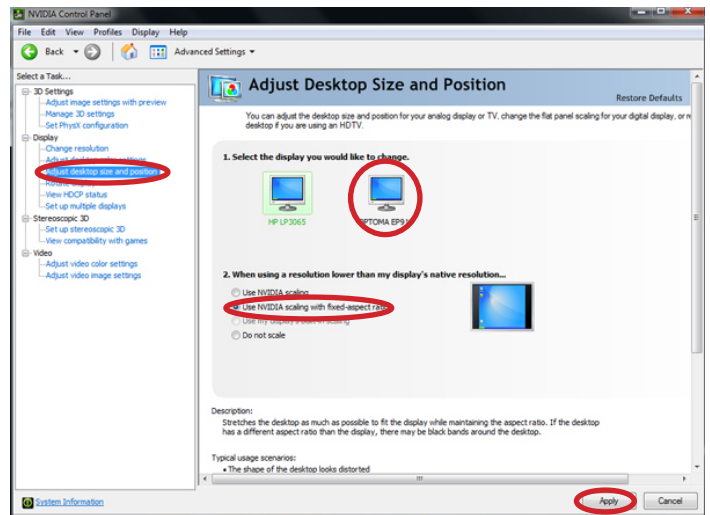
From the left-side menu select "Adjust desktop size and position"

Under Step 1 right-hand side select Optoma EP910

Under Step 2 select "Use NVIDIA scaling with fixed-aspect ratio."

Click Apply

If everything looks normal click "Yes" on the Apply changes prompt



4

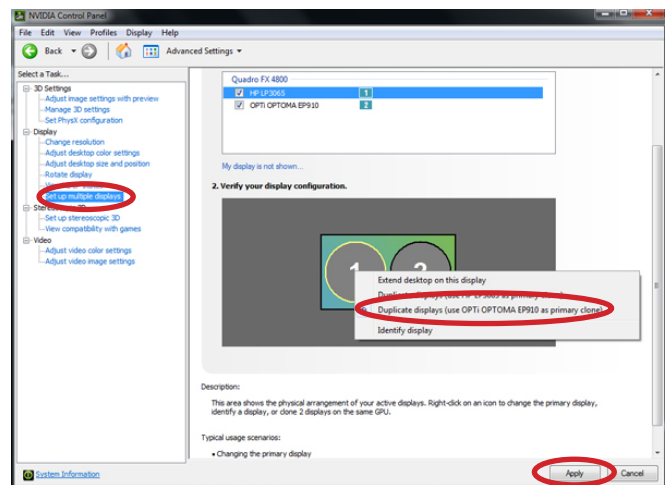
## Set-Up Multiple Displays

From the left-side menu select "Set-Up Multiple Displays"

Right mouse click Under Step 2. Select Duplicate display (use Optoma EP910 as the primary)

Click Apply

If it is still messed up try adjusting the fixed-aspect scaling again.





***For further information or in case of an AV emergency contact:  
Office of Institutional Technology  
Ringling College of Art + Design  
Phone: 359-7633  
Email: [avservices@ringling.edu](mailto:avservices@ringling.edu)***